

SOUTHWEST FLORIDA YACHTS[®]

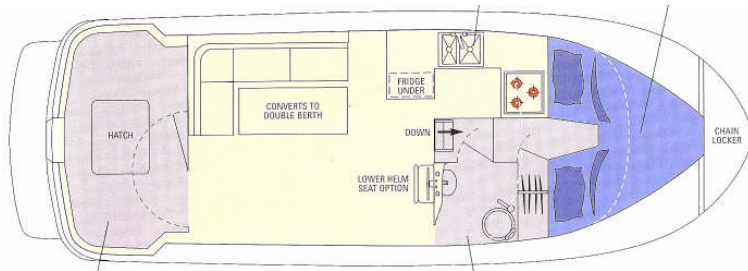
INC.



Camano 31 Trawler Single Engine w/Bow Thruster

“NOMAD”

Comments: Are you ready to get away from it all? How does no phone, no traffic and no schedule sound? If you like that then you will love “Nomad!” With this little ship you can wander leisurely through the barrier islands of Southwest Florida. “Nomad” has all the comforts of home in one small floating package. Call us soon to schedule your getaway aboard “Nomad!”



Inventory and Equipment List
Camano 31 Trawler
Nomad

Fiberglass vessel
Length overall: 31'
LOD: 28'
Beam: 10' 6"
Draft: 3'3"
Displacement: 10,000 lbs.
Fuel capacity: 133 gallons
Water capacity: 70 gallons
Vertical clearance: 14' 6"
Berths: 4
 Forward Cabin: Double – 71" x 74"
 Main salon – Table converts to double (70" x 42")
Holding tank: 13 gal.
Headroom 6'3"
Teak interior
Cabin flooring: Teak and holly
Entry door: Aft
Galley down
L-shaped dinette with table and (1) chair
Head: (1) electric Vacu flush toilet w/ holding tank
Shower in head and on aft deck
Macerator pump
Interior lighting, 12VDC and 110VAC
Power - Single Volvo D4-210A, 210 hp diesel
Cruise speed: 9 knots @ 2500 rpm (approx.)
Fuel consumption: 2-3 gph @ 2500 rpm (approx.)
Bow thruster: Key Power
Steering: Sea Star hydraulic
Generator – Kohler 4 kw diesel
Dual Racor fuel filters w/ vac. gauge on main engine
Engine compartment ventilation
Engine room lighting
Air conditioning & heat: Marineair with reverse-cycle heat
Batteries: (3) group 27 marine batteries
Battery charger: Xantrex TC204
Charger/inverter: Xantrex Pro Watt 1750
Electrical control panels: 12 VDC and 110 VAC
Inverter: Freedom 20 with Link Monitor Control
Shore power cord: (2) 30 amp. shore power cords
(2) Shore power adapters: 30-50 amp.
Hot and cold pressure water system
Refrigerator/ Freezer– Nova Kool 12 VDC,
Stove: (2) burner Force 10 propane
Microwave oven
Bilge pumps (3) Rule 500 gph
Ship's clock and barometer
AM/FM Stereo: Sony
CD player: Sony
Color flat panel TV
DVD player
Portable vacuum with attachments
Compasses: (2) Danforth
Hand-bearing compass
Cooler under foot stool

Engine and transmission controls
Engine and generator hour meters
Engine instrument panel at both helms
Tool kit
GPS: Garmin GPS 76 and 76C
VHF Radio: ICOM M402 interfaced to lower GPS
Depth sounder and Fish finder: Lowrance 51x
Autopilot: Raymarine ST 600R
Spotlight & flashlights
Anchors:
 (1) Bruce 33lb. with 50' ¼" chain & 300' ½" rode
 (1) Danforth 13lb. with 15' ¼" chain and 100' ½" rode
Anchor windlass: Maxwell with deck and f/b controls
Anchor washdown
Handheld shower on swim platform
Engine and generator spare parts
Flare kit
First Aid Kit
Ship's logbook
Ship's files & equipment manuals
Navigation tools, charts and cruising guide
Navigation lights
Fire extinguishers, smoke & CO detectors
Engine room fire extinguishing system
Life jackets: (2) Type I and (4) Type II
Buoyant cushion
Life ring
Binoculars
Deck bucket and brush
Deck hose and nozzle
Transom door to swim platform
Ladder to upper deck
Main salon windows: curtains & sliding screens
Fwd. cabin hatch with screen/sunshade & side ports with screens
F/B seating: (3) padded helm chairs
Folding deck chairs on aft deck (2)
Boathook
Radar reflector
US Yacht Flag and staff
Hunter green canvas:
 Bimini and boot
 Windshield cover
 F/B cover for helm and seats
 Full aft curtain for use in heavy rains
Tinted windows
Courtesy lights
BBQ grill (propane) with rail mount
Dinghy: Mercury inflatable
Dinghy oars, anchor & rode, fuel tank
Dinghy davits on transom
Outboard motor- Yamaha 2.5 hp
Linens and towels for (4)
Galley gear for (4)

Equipment may vary • Specifications are approximate • Capacities are approximate

Revised 3/10

